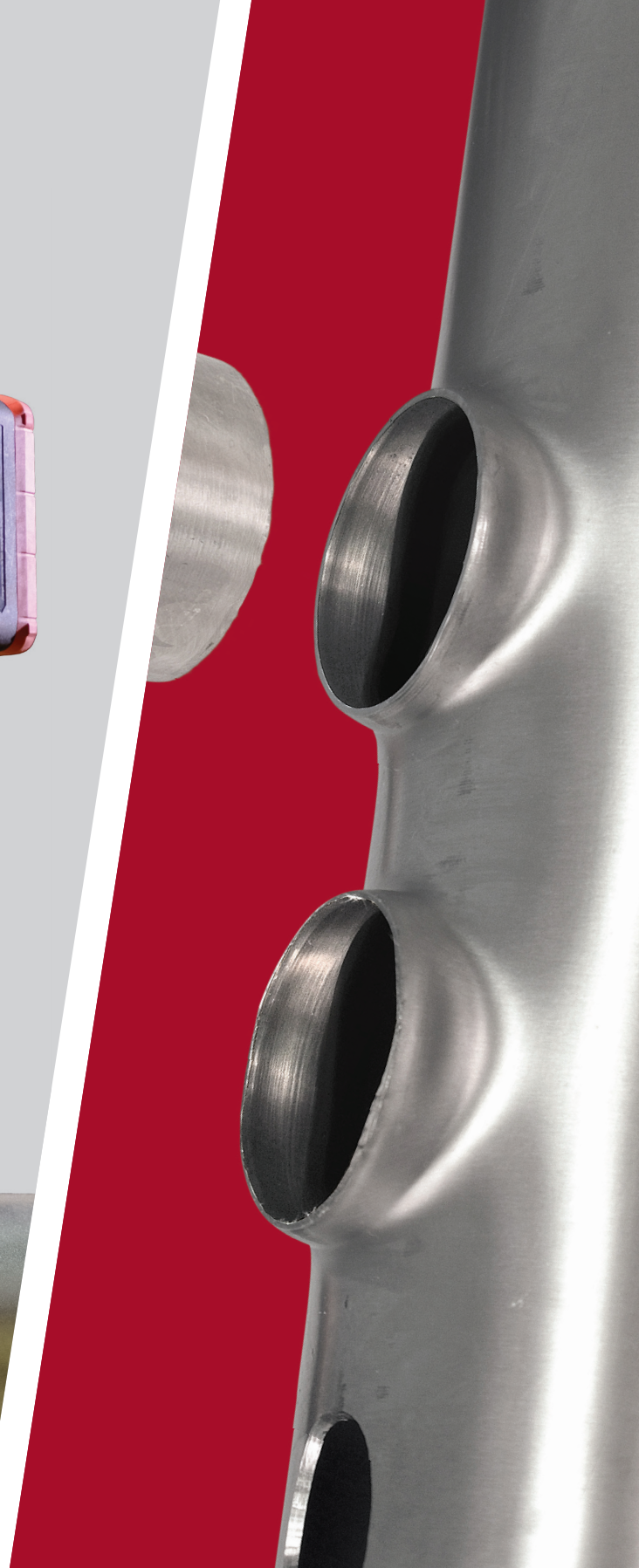
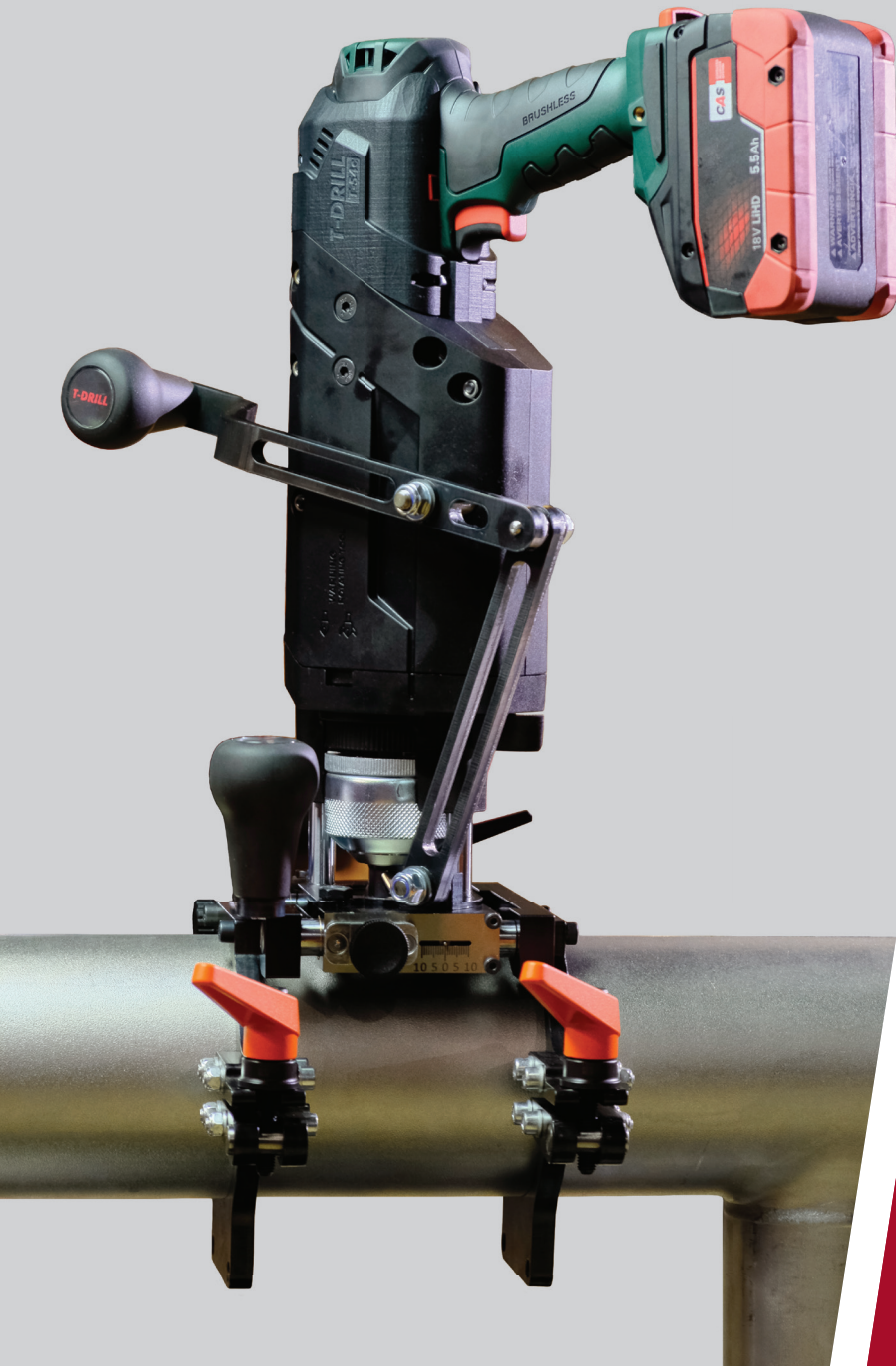


T-DRILL

PRODUCTIVITY AS A PRODUCT.



COLLARING MACHINE

Cordless Collaring Machine for Stainless Steel Pipes

T-54c SST

T-54c SST Collaring Machine

The powerful **T-DRILL T-54c SST** is an ideal solution for making tee joints of O.D. 17-54 mm in just a couple of minutes. The cordless collaring machine is easy to use and adjust according to your needs.

The **T-54c SST** is excellent for construction and renovation projects, as well as for the demanding field conditions in maintenance, repair work, and the process industry.

With the **T-DRILL T-54c SST**, there is no need for separate T-pieces, which ensures both efficiency and cost-effectiveness for your operations.



T-54c SST Capacity

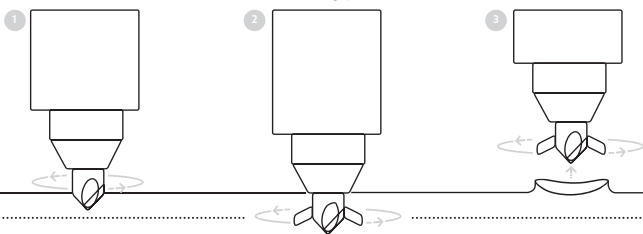
Run tube outside diameter	Branch tube outside diameter						
	mm	17,2	21,3	26,9	33,7	42,4	48,3
Tee range		17-19	20-25	25-30	30-34	34-44	45-54*
26,9	2,0	2,0	1,6	-	-	-	
33,7	2,0	2,77	2,77	1,6	-	-	
42,4	2,0	2,77	2,77	2,77	1,6	-	
48,3	2,0	2,77	2,77	2,77	2,77	1,6	
60,3	2,0	2,77	2,77	2,77	2,77	2,77	
76,1	2,0	3,05	3,05	3,05	3,05	3,05	
88,9	2,0	3,05	3,05	3,05	3,05	3,05	
114,3	2,0	3,05	3,05	3,05	3,05	3,05	
≤ 300	With optional ring clamps						

Max wall thickness of stainless steel pipe (mm)

* Over 51 mm O.D. max. wall thickness 2,0 mm

THE T-DRILL PROCESS

1. Drilling of the pilot hole
2. Extension of the forming pins
3. Finished collar



DO IT WITH T-DRILL

Cut costs – Improve quality – Increase profit

- No T-fittings
- No costly inventories
- No tube cutting

- Only one welded joint
- Minimized inspection cost
- Tee ratio variation flexibility

- Smaller risk of leakage or call-backs
- Optimized flow-characteristics

MANUFACTURER:

T-DRILL

T-DRILL OY

Ampujantie 32
66400 Laihia, FINLAND
Tel. +358 6 475 3333
Telefax +358 6 475 3300
sales@t-drill.fi, www.t-drill.fi

T-DRILL Industries Inc.

1740 Corporate Drive,
Suite #820, Norcross,
Georgia 30093 USA
Tel. +1-770-925-0520,
Toll-free +1-800-554-2730
Telefax +1-770-925-3912
sales@t-drill.com
www.t-drill.com

REPRESENTED BY: